

SV 125 1p 25A



Specifications

ETI Code	002423122
Description	SV 125 1p 25A
Class name	Build-in switch
function	Build-in switch
Rated current (A)	25A

Online product page 

Other documentation



Technical data catalogue

Certificate

3D Model

2D File

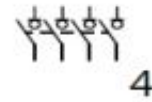
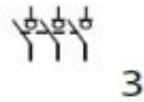
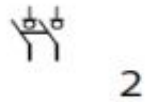
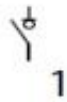
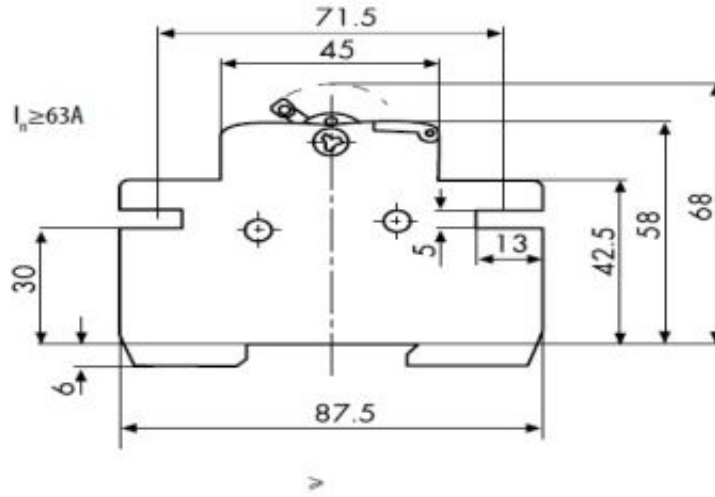
CE declaration

Eplan file

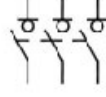
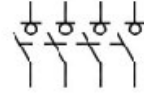
ETIM international classification

Classification	EC000216
Class name	Switch disconnecter
Version as main switch	Yes
Version as maintenance-/service switch	Yes
Version as safety switch	Yes
Version as emergency stop installation	Yes
Max. rated operation voltage Ue AC	230V
Rated permanent current Iu	25A
Conditioned rated short-circuit current Iq	2kA
Number of poles	1
Motor drive optional	No
Motor drive integrated	No
Voltage release optional	Yes
Device construction	Built-in device fixed built-in technique
Suitable for distribution board installation	Yes
Type of control element	Rocker lever
Interlockable	No
Type of electrical connection of main circuit	Frame clamp
Degree of protection (IP), front side	IP20

Dimension drawing



Symbol/Connection

**2****3****4**