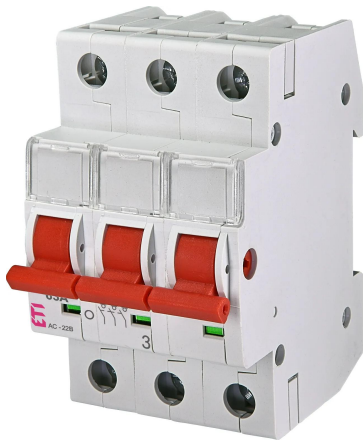


SV 363 3p 63A



Specifications

ETI Code	002423314
Description	SV 363 3p 63A
Class name	Build-in switch
function	Build-in switch
Rated current (A)	63A

[Online product page](#) 

Other documentation



[Technical data catalogue](#)

[Certificate](#)

[3D Model](#)

[2D File](#)

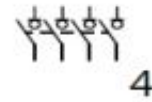
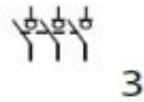
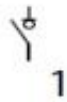
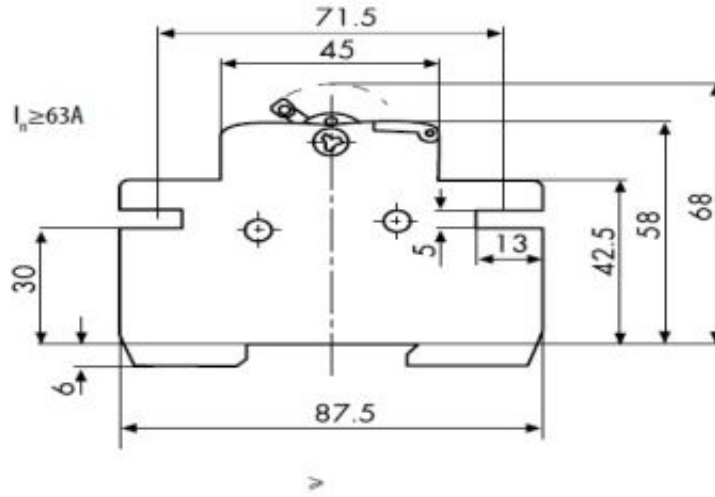
[CE declaration](#)

[Eplan file](#)

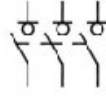
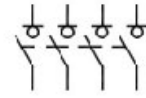
ETIM international classification

Classification	EC000216
Class name	Switch disconnecter
Version as main switch	Yes
Version as maintenance-/service switch	Yes
Version as safety switch	Yes
Version as emergency stop installation	Yes
Max. rated operation voltage Ue AC	400V
Rated permanent current Iu	63A
Conditioned rated short-circuit current Iq	4kA
Number of poles	3
Motor drive optional	No
Motor drive integrated	No
Device construction	Built-in device fixed built-in technique
Suitable for distribution board installation	Yes
Type of control element	Rocker lever
Interlockable	No
Type of electrical connection of main circuit	Frame clamp
Degree of protection (IP), front side	IP20

Dimension drawing



Symbol/Connection

**2****3****4**